



# DEUBLIN

## Rotating Union 9000 Series for Steam, DN 20 - 50

- monoflow and duoflow design
- self-supported rotating union
- spherical seal; lapped Carbon Graphite Rings
- seal wear indicator allows preventive maintenance
- 2 torque lugs on the housing
- nickel-plated cast iron housing
- steel rotor, nickel-plated for steam service

For hot oil applications please refer to models of our H-series on pages 27 - 30; Models with threaded rotor optionally available.

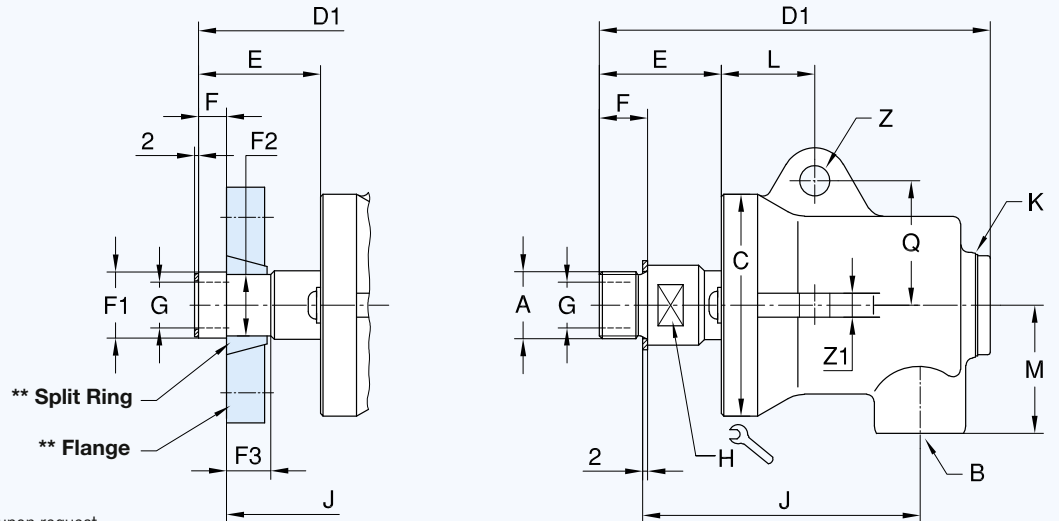
For further information please contact **DEUBLIN** or your local representative.

### Operating Data

Max. Saturated Steam Pressure*	150 PSI	10 bar
Max. Speed*	400 RPM	400 min <sup>-1</sup>
Max. Temperature	185 °C	> 185 °C consult <b>DEUBLIN</b>

\* Operation at max. pressure combined with max. speed is not permissible

### Monoflow Rotating Union for Steam



\*\* supplied by customer, data sheet available upon request

### Monoflow Rotating Union

DN	B	Ordering No.	A		C	D1	E	F	F1	F2	F3	G	H	J	K	L	M	Q	Z	Z1	kg
			Rotor Connections																		
20	G 3/4	9075-008-110	G 3/4	RH	87	155	48	19	-	-	-	18	27	109	G 1	37	51	49	12	13	2.4
	G 3/4	9075-008-111	G 3/4	LH	87	155	48	19	-	-	-	18	27	109	G 1	37	51	49	12	13	2.4
	G 3/4	9075-008-117	For Quick Connect Flange		87	155	48	11.1	26.0 25.9	24.25 24.15	17.5	18	-	115	G 1	37	51	49	12	13	2.4
25	G 1	9100-008-113	G 1	RH	97	184	60	22	-	-	-	25.4	32	129	G 1	38	54	54	13	13	3.7
	G 1	9100-008-112	G 1	LH	97	184	60	22	-	-	-	25.4	32	129	G 1	38	54	54	13	13	3.7
	G 1	9100-008-121	For Quick Connect Flange		97	184	60	11.1	32.36 32.23	30.89 30.76	17.5	25.4	-	138	G 1	38	54	54	13	13	3.7
32	G 1 1/4	9125-008-118	G 1 1/4	RH	112	206	65	25.4	-	-	-	32	41	140	G 1 1/2	42	66	60	13.5	13	6.3
	G 1 1/4	9125-008-119	G 1 1/4	LH	112	206	65	25.4	-	-	-	32	41	140	G 1 1/2	42	66	60	13.5	13	6.3
	G 1 1/4	9125-008-126	For Quick Connect Flange		112	206	65	12.7	41.0 40.9	39.65 39.55	19	32	-	150	G 1 1/2	42	66	60	13.5	13	6.3
40	G 1 1/2	9150-008-113	G 1 1/2	RH	136	230	62	28.5	-	-	-	38	46	153	G 1 1/2	55	79	73	16	19	8.7
	G 1 1/2	9150-008-114	G 1 1/2	LH	136	230	62	28.5	-	-	-	38	46	153	G 1 1/2	55	79	73	16	19	8.7
	G 1 1/2	9150-008-117	For Quick Connect Flange		136	230	62	12.7	47.37 47.27	45.09 44.99	22.2	38	-	167	G 1 1/2	55	79	73	16	19	8.7
50	G 2	9200-008-117	G 2	RH	155	252	68	30	-	-	-	49	60	168	G 1 1/2	62	86	87	16	25.4	13.5
	G 2	9200-008-118	G 2	LH	155	252	68	30	-	-	-	49	60	168	G 1 1/2	62	86	87	16	25.4	13.5
	G 2	9200-008-121	For Quick Connect Flange		155	252	77	15.9	58.93 58.80	56.64 56.51	28.5	49	-	189	G 1 1/2	62	86	87	16	25.4	13.5